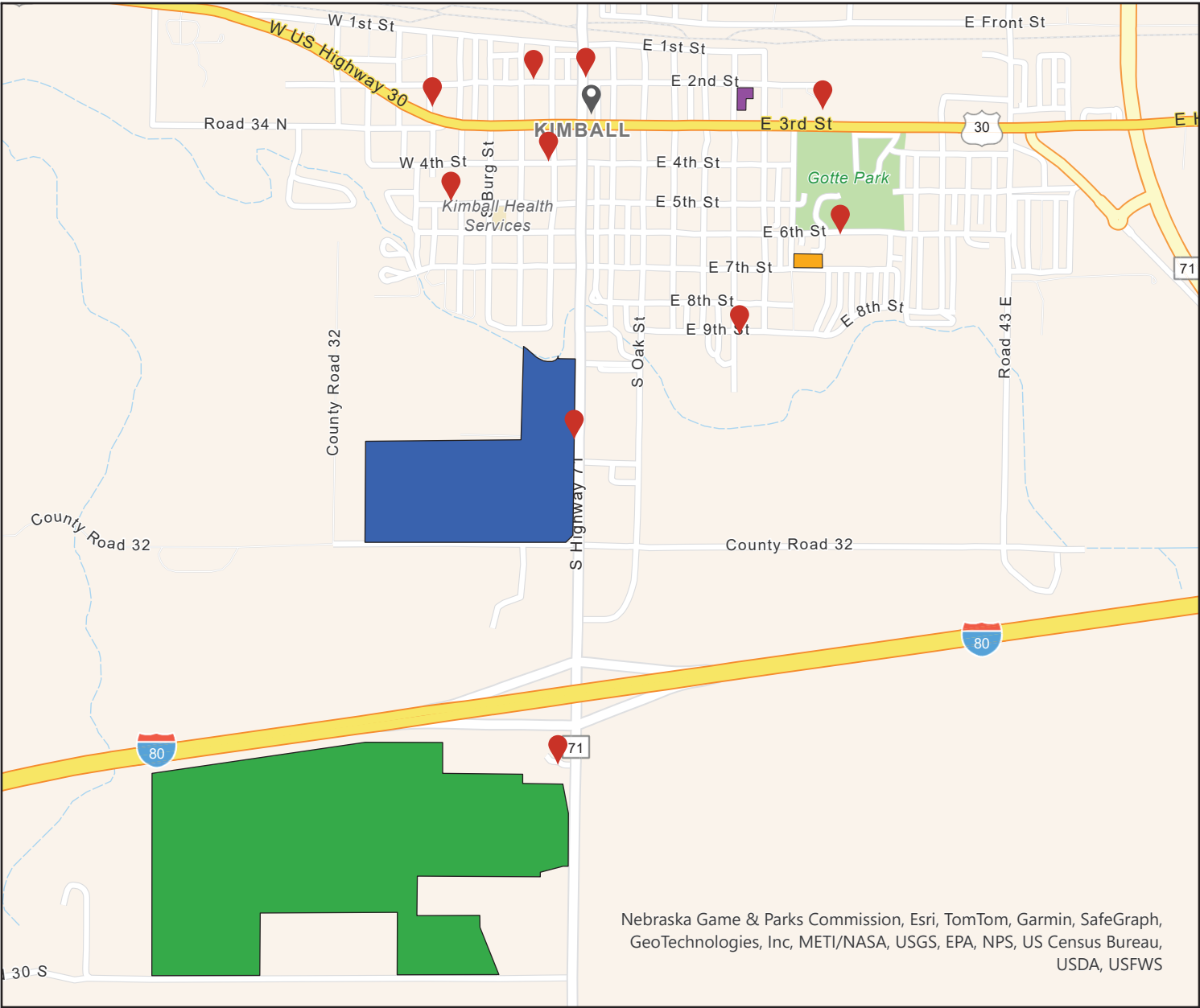


# Future Development Sites with Proposed Bus Stop Locations



- Proposed Bus Stop Locations
- Proposed Bus Stop Locations
- KCTS Annex/Office
- KCTS Annex/Office
- Clean Harbors - 7th Street Apartments
- Clean Harbors - 7th Street Apartments
- Clean Harbors - Lighthouse Subdivision
- Clean Harbors - Lighthouse Subdivision
- Rural Workforce Housing Fund Duxplexes
- Rural Workforce Housing Fund Duxplexes
- Antelope Ridge Development
- Antelope Ridge Development

Nebraska Game & Parks Commission, Esri, TomTom, Garmin, SafeGraph, GeoTechnologies, Inc, METI/NASA, USGS, EPA, NPS, US Census Bureau, USDA, USFWS

